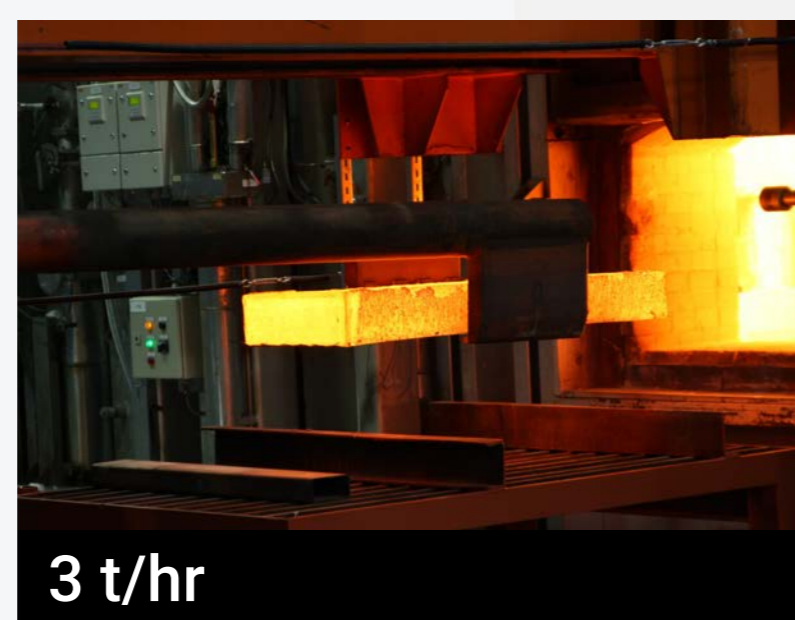
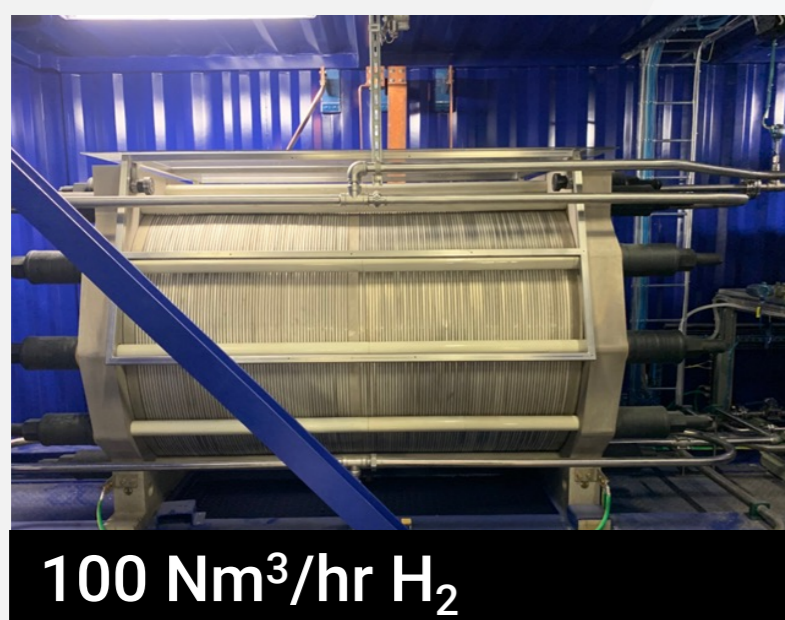


Large-scale gas research facilities for the metallurgy industry

Welcome to Swerim, a cutting-edge research facility dedicated to revolutionising gas processing in the metallurgy industry.

Our research centre is equipped with state-of-the-art infrastructure and innovative technology that enables seamless achievement of Key Performance Indicators (KPIs) for industrial processes.

This facility is the perfect platform for demonstrating and refining your technology to advance the industry to new heights.



We pride ourselves on our capacity to accommodate large-scale research pilots and demos.

Our facilities include:

- ▶ An alkaline electrolyzer with a capacity of 100 Nm³/hr H₂ production
- ▶ A walking beam furnace capable of processing 3 t/hr.
- ▶ A dedicated compressor offering 800 Nm³/hr compression up to 25 bar, and much more.

Our comprehensive infrastructure ensures that we can meet and exceed the most demanding cases with relative ease.



- | | | |
|-----------------------|--------------------------------------|------------------|
| 1. Pilot-plant halls | 6. Electrolyzer | A. Storage |
| 2. Demo Plant I | 7. Gas Holders | B. Railway Track |
| 3. Demo Plant II | 8. Chem station | C. Head Office |
| 4. Gas Cleaning Plant | 9. Workshop | |
| 5. ATEX zones | (mechanical, electrical, instrument) | |



ATEX zones are the key to demonstrating large scale gas processing under industrial conditions. Swerim has flexible use zones in the 60-320 m² floor space up to 15 m in height.

